

# Videojet® CLARiSOFT®

Package Coding Design Software

## Package Coding Management.

Ink Jet.

Laser.

Thermal Transfer.

Labelers.

Track & Trace.

Supplies.

Parts & Service.

**CLARiSOFT®** is intuitive Windows® package coding design software that provides one standard design solution for all your coding operations. This patented coder independent technology is created specifically for use with real-time, on-line package coding and labeling equipment. CLARiSOFT ensures consistent, accurate messages are applied to the correct packages, even if you utilize more than one type of marking and coding technology in your operation.

## Reduce overhead

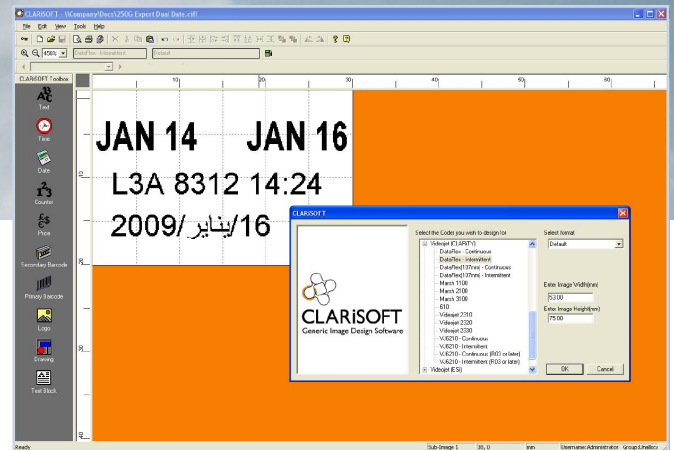
- No need to create different designs for your different coder types
- No need to buy, learn and maintain different printer-specific design software

## Increase control, increase efficiency and reduce errors

- All your designs can be created and managed away from the production line
- No need to create image “messages” at every coding machine

## Advanced capabilities

- Unique date calculation manager and concession controls to reduce the potential for human error
- Easy-to-use wizard based interface for complex or merged fields such as GS1-128 bar codes

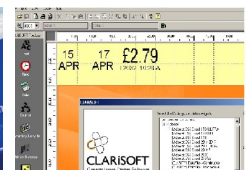
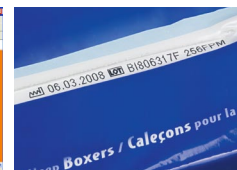
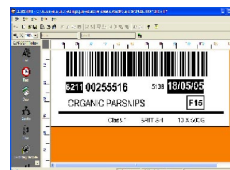


## Advanced capabilities (continued)

- Full open-database connectivity (ODBC) for seamless connection to SQL, Access, Excel and generic databases
- Powerful print preview function allows users to review the finished design before printing, to reduce waste and save time
- Comprehensive driver support for Videojet thermal transfer overprinters, continuous ink jet printers, high resolution large character and bar code printers, and print and apply labelers

## Future proof

- Networking capability for plant-wide solutions when used with CLARiNET® package coding network control software
- The patented generic file structure of CLARiSOFT ensures future compatibility with your choice of coder technology



### Standard Features

- Patented coder-independent file format (CIFF)
- Near WYSIWYG message design, print preview and editing
- Intuitive easy-to-use Windows® interface
- Supports Windows 2000, XP, Vista and Server 2003
- Drag-and-drop editing, nudge features and multi-level undo
- Configurable and multi-level password control
- Inverse print for use with white ribbons
- Mirror print for reverse side overprinting
- CLARiSOFT Database Manager

### Print Options

- RS232C or TCP/IP
- TCP/IP network using Videojet CLARiNET® network software
- Print-to-file (USB) to transfer coder designs to the printer
- Parallel, USB and network Windows printers

### Object Edit Functions

- Resize/ Position – drag + xy co-ordinate entry
- Grid (configurable)
- Rotate (0°, 90°, 180° and 270°)
- Object overlays
- Object mirror, phantom and inverse

### Field Types

- Text (fixed, prompted or database)
- Text Block (paragraphs)
- Time
- Date (fixed, prompted, calculated or database)
- Counter (alpha, numeric or alpha-numeric)
- Merged Fields
- Bar Code (linear, stacked or 2D)
- Logo (graphic import)
- Drawing (shape drawing; outline or filled)
- Automatic User ID, Line ID or Equipment ID

### Text Capabilities

- Windows TrueType® fonts
- Embedded printer fonts
- Multi-line text (paragraphs)

### Variable Functions

- Prompted (user input at print time)
- Prompted with mask (e.g. numeric only)
- Prompted user list (user selection from pre-defined list)
- Date calculations (pre-defined date offset)
- Concession management (limit user entry to prevent errors)
- Automatic date rounding (round up, down or nearest)
- Reference date calculations (e.g. Use By = Sell By + 1)
- Counter (alpha, numeric or alpha-numeric)
- Date and time (choice of pre-defined and custom formats)

### Graphic File Formats (for import)

BMP, JPEG, PCX, PNG, TIFF

### Bar Codes

- UPC-A, UPC-E, EAN8, EAN13 (incl. price verifiers)
- Code 128, UCC/EAN 128 (GS1-128)
- Code 39, Interleaved 2 of 5 (ITF)
- GS1 Databar (RSS), GS1 Datamatrix (2D bar code)
- PDF 417, Micro PDF417 (2D bar codes)

### Languages:

CLARiSOFT is available in English, Dutch, French, German, Italian, Japanese, Korean, Polish, Portuguese, Simple Chinese, Spanish, Thai and Traditional Chinese.

### Character Sets

Full Unicode support including Chinese, Russian, Scandinavian, Greek, Arabic and Japanese/Kanji character sets

### Date Languages

Automatic date language conversion

### Database Connections

Integral open-database-connectivity (ODBC) connection to SQL, Access, Excel and generic databases

### Minimum System Requirements

Windows operating system (2000, XP, Vista or Server 2003)  
Pentium 2 200MHz. 128MB RAM, 300 MB disk space.  
1024x768 16 bit color display. Mouse. CD-ROM. USB port.

### Videojet Package Coding Management (PCM) Software

The Videojet suite of PCM software includes CLARiSOFT package coding design software, CLARiNET package coding network control software, optional portable or unattended (fixed position) bar code validation and CLARiNET Intranet remote view modules. For further information contact your local Videojet sales engineer or distributor.

### IMPORTANT NOTE

The specific capabilities in respect of field types, fonts and character sets will be dependent upon the specific model of printer. We also advise that you contact your local Videojet sales engineer or distributor to ensure that the appropriate printer firmware can support connection with CLARiSOFT software. An upgrade may be required.



800-843-3610

[www.videojet.com](http://www.videojet.com) / [info@videojet.com](mailto:info@videojet.com)

Videojet Technologies Inc. / 1500 Mittel Blvd.  
Wood Dale IL 60191-1073 / USA

Phone 630-860-7300 Fax 630-616-3623

